



FULL SERVICE - FULL TIME
A McNational Corporation



National Maintenance & Repair, Inc. Engine Repair operates out of our facility in Hartford, Illinois, just across the Mississippi River from St. Louis, Missouri, where it has been for over sixty years. Among key management and skilled technicians, they average over 20 years of work experience providing the highest QUALITY - VALUE - SERVICE to the rail industry. National Maintenance & Repair, Inc. has over 25,000 square feet of well-maintained space supporting engine/parts production. We have been an industry leader in developing methods and technologies to improve efficiencies of remanufacturing operations and repairs for years and continue to develop advancement to better serve our customers' needs and requirements.

We continue to serve our customers out of our Hartford facility but are capable of sending traveling teams anywhere in the United States as well as the world. We pride ourselves in prompt response to service needs and are available 24 hours a day, 365 days a year with the flexibility to tailor the engine/parts options to the customer's specific needs and timetables. This flexibility together with our proven attention to quality (AAR M-1003 Certified) which meets or exceeds original specifications at competitive pricing makes National Maintenance & Repair, Inc. Engine Repair the logical choice of many industry-leading organizations.



National Maintenance represents years of experience in the quality repair of prime movers and component parts. Whether you need a few parts or are considering major conversion programs, you can call on us to meet your engine needs.

A collection of engine parts and components, including a large vertical assembly, various smaller parts, and a large grey engine block, displayed against a red background.

NATIONAL MAINTENANCE & REPAIR

ARR M-1003 CERTIFIED

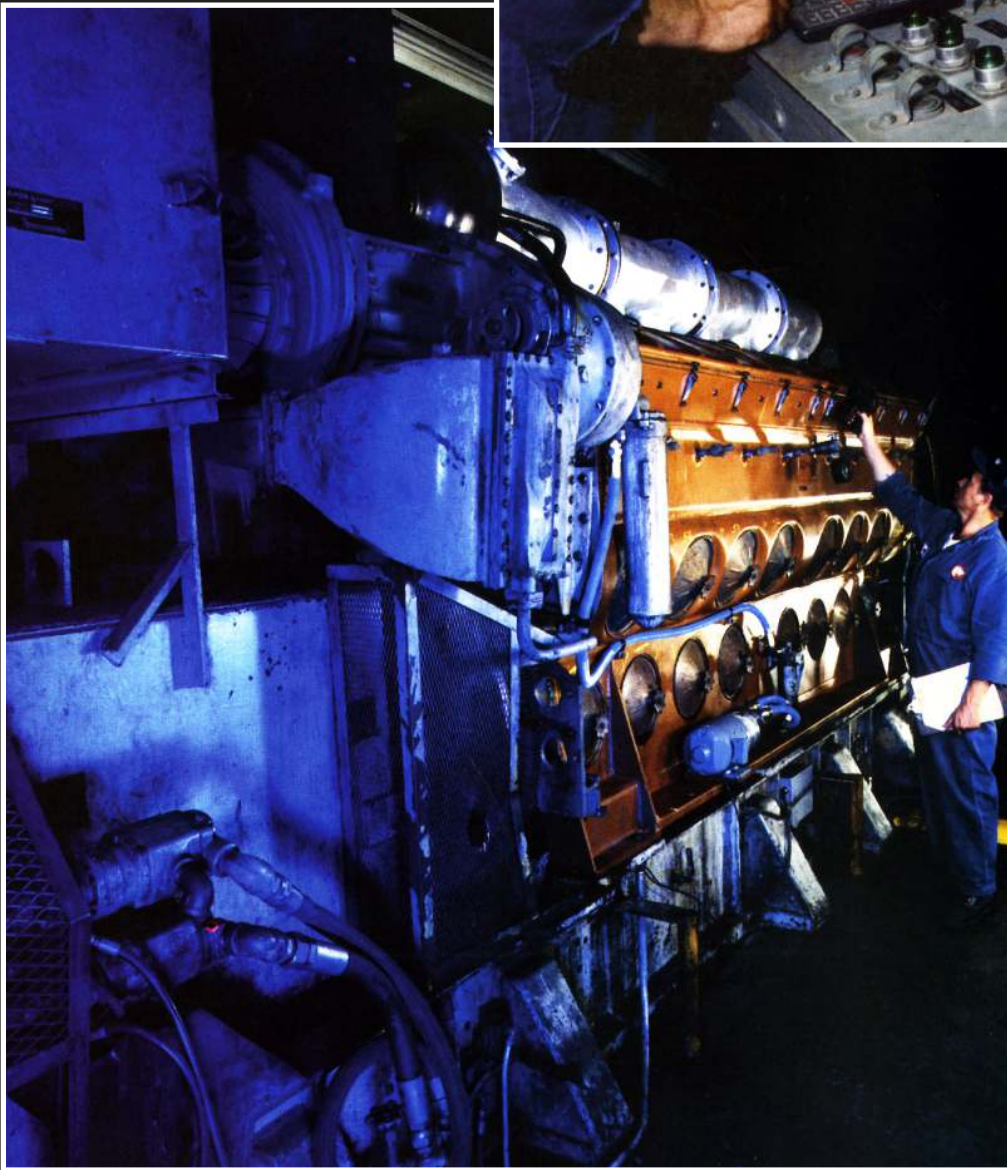
National Maintenance completes all repairs to your specifications and offers a wide variety of options in component parts. During the entire remanufacturing/repair process, strict quality guidelines and documentation is followed to assure compliance to the AAR M-1003 Standards. This offers you assurance that you receive a trouble-free engine built to exacting standards every time, backed by our warranty.

The proper tools used by the most skilled technicians in the business, help assure on-time delivery of the quality products.

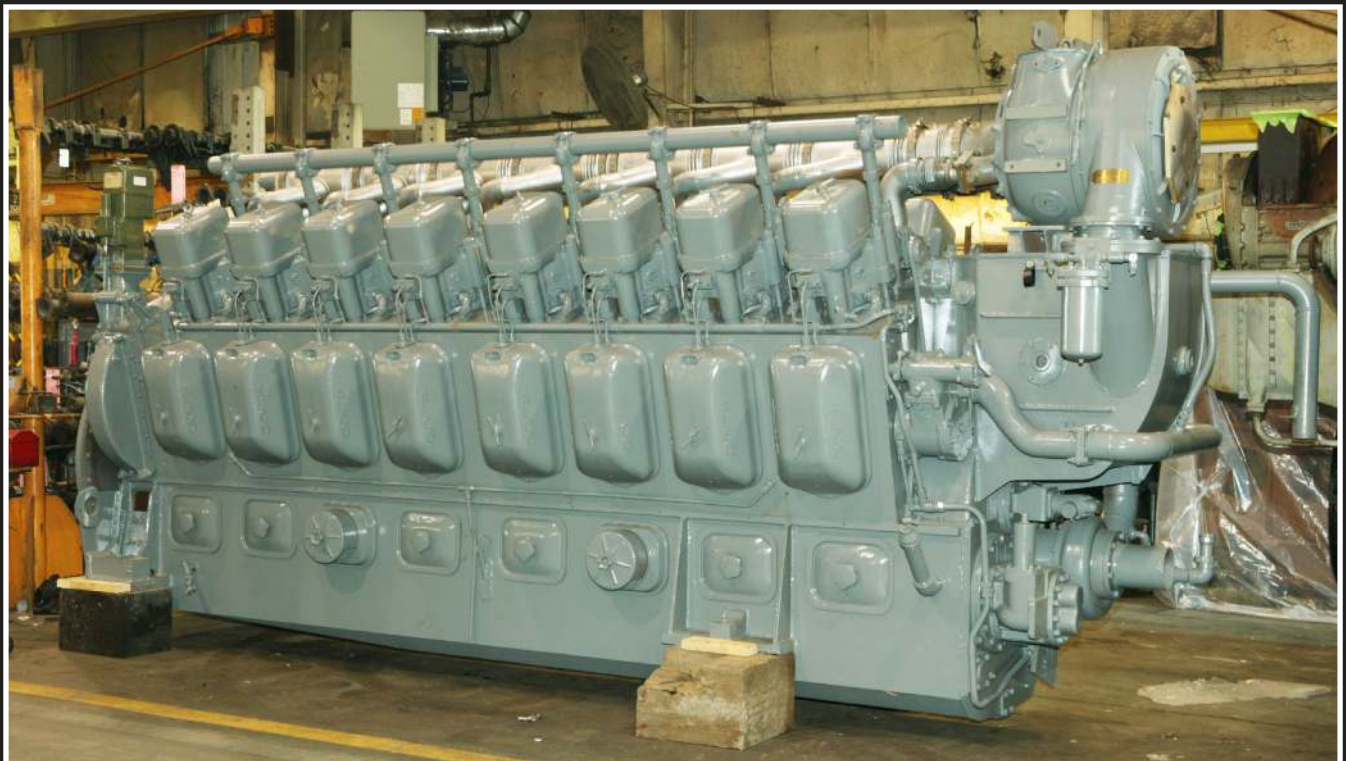


While providing services on many types of engines, National Maintenance has specialized in GE, EMD, ALCO and other large diesel engines and component parts. Our services include complete engine remanufacturing including welding and machining repairs, minor and major engine conversions, crankshaft changes, Dyno-Testing, overhauls, crankcase assembly repairs and line boring. All repairs can be completed in the field as well as at the Hartford shop. We can repair and return your prime movers or unit exchange them to assure even faster response.





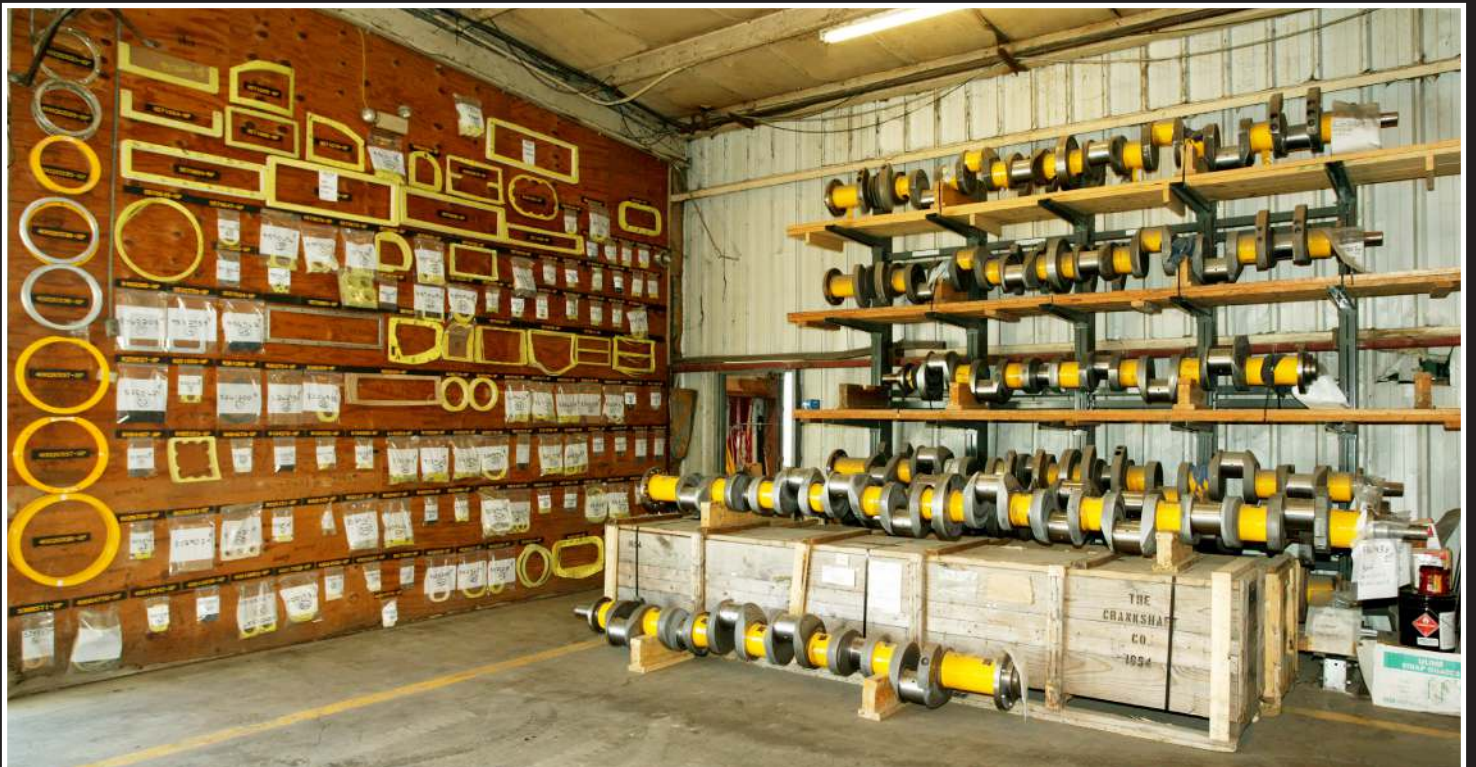
Upon final assembly, we Dyno-Test your prime mover. The result is engine performance and reliability to meet today's strict needs.







***National Maintenance offers parts sales including
New, Utex, outright, and repair & return.***



ASSOCIATION OF AMERICAN RAILROADS
QUALITY ASSURANCE PROGRAM CERTIFICATION



THIS CONFIRMS THAT

National Maintenance & Repair, Inc.

HAS MET THE REQUIREMENTS OF THE ASSOCIATION OF AMERICAN RAILROADS
QUALITY ASSURANCE PROGRAM AS SPECIFIED IN M-1003

CERTIFICATE NUMBER: NMRX

LOCATION: Hartford, IL

PRODUCT/SERVICE: B41B - Reconditioner of Locomotive Power Assemblies, B43B - Reconditioner of Locomotive Cylinder Heads, B49B - Reconditioner of Locomotive Fuel Pumps, B51B - Reconditioner of Locomotive Water Pumps, B53B - Reconditioner of Locomotive Oil Pumps, B61B - Reconditioner of Locomotive Engines

CERTIFICATION DATE: 5/4/2017

EXPIRATION DATE: 5/4/2020

APPROVED: *Nicholas Fimple*
(Executive Director Rules and Standards)

APPROVED: *Jerry A. Cook*
(Chairman, Quality Assurance Committee)

AAR (M-1003) Certified
Since 1997



***401 South Hawthorne Street
PO Box 38
Hartford, IL 62048***

***IL - 618.254.7451
Outside IL - 800.325.3625***

www.mcnational.com